

Getting started with mLAN Tools V1.04

This document will serve several purposes. First is a 4-step quick guide to configuring and connecting the Graphic Patchbay. Next will show you how to save a template that will recall your settings for use with the Graphic Patchbay or the Auto Connector.

You will then learn to assign the Graphic Patchbay template to open with the Auto Connector and place it in your start up folder to connect your multi-device mLAN system every time you power up your Mac.

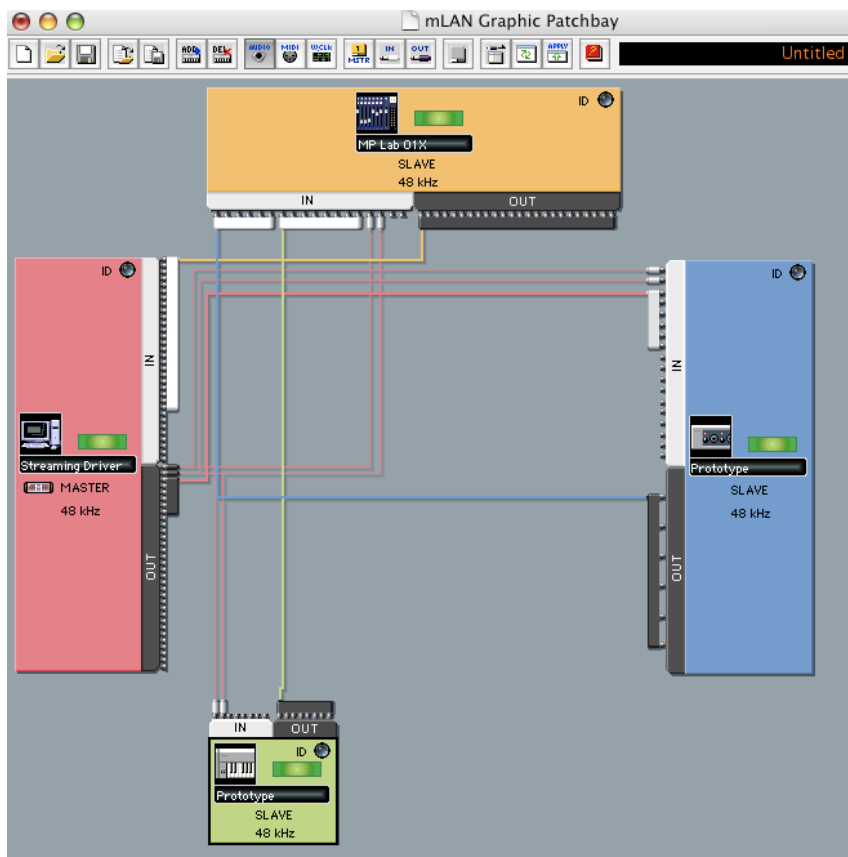
There are 4 simple steps to establishing an mLAN network:

- 1: Drawing the Audio Cables between the mLAN devices.
- 2: Drawing the MIDI Cables between the mLAN devices.
- 3: Drawing the Wordclock Cables from the Master Device to the Slave Devices.
(Currently, this version mLAN Tools require that the Mac be the Wordclock Master)
- 4: Transmitting this information to the devices by clicking the Apply Button in Graphic Patchbay or Connecting to the device using the Auto Connector.

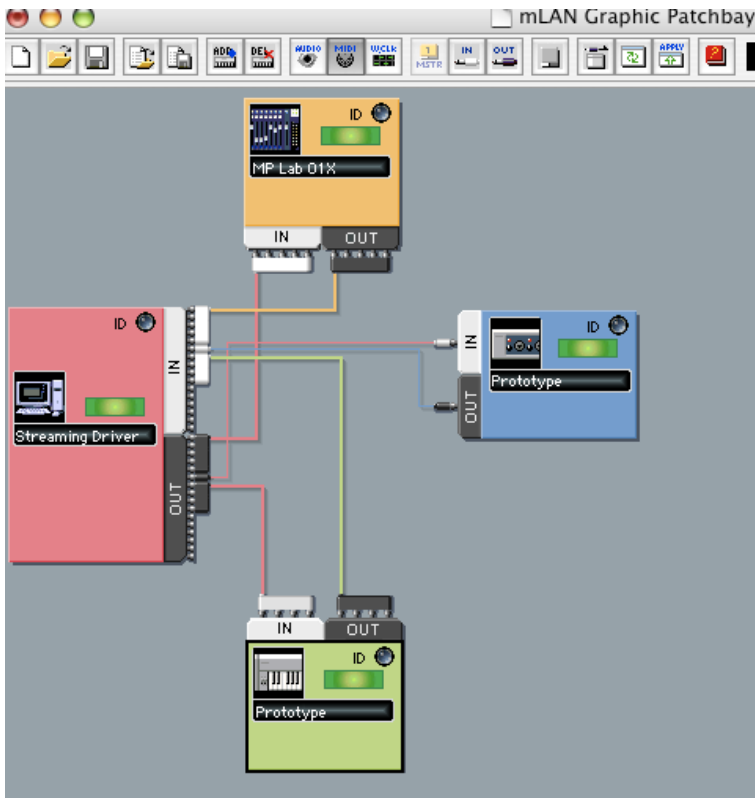
Let's connect an mLAN Network!

Launch the Graphic Patchbay it will be found in the Applications/mLAN Tools folder.

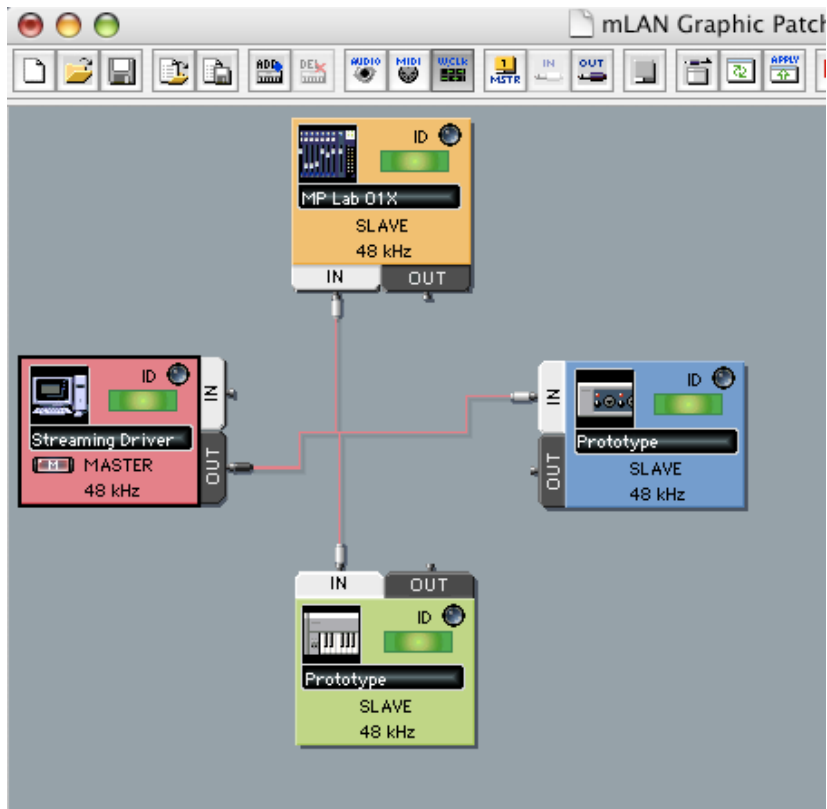
Step 1: Click the Audio Button. Draw Audio connections (See screenshot below)



Step 2: Click the MIDI Button. Draw MIDI device connections (See screenshot below)

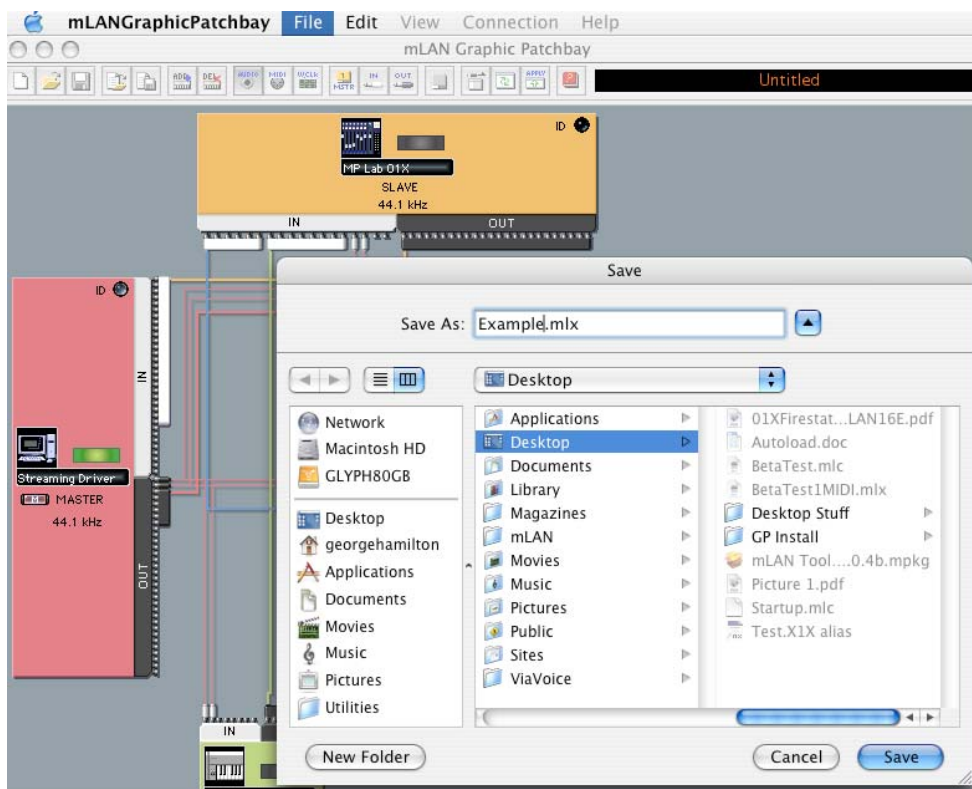


Step 3: Click the WCLK Button. Click the 1 MSTR Button. It will draw the connections As seen in the screenshot below.



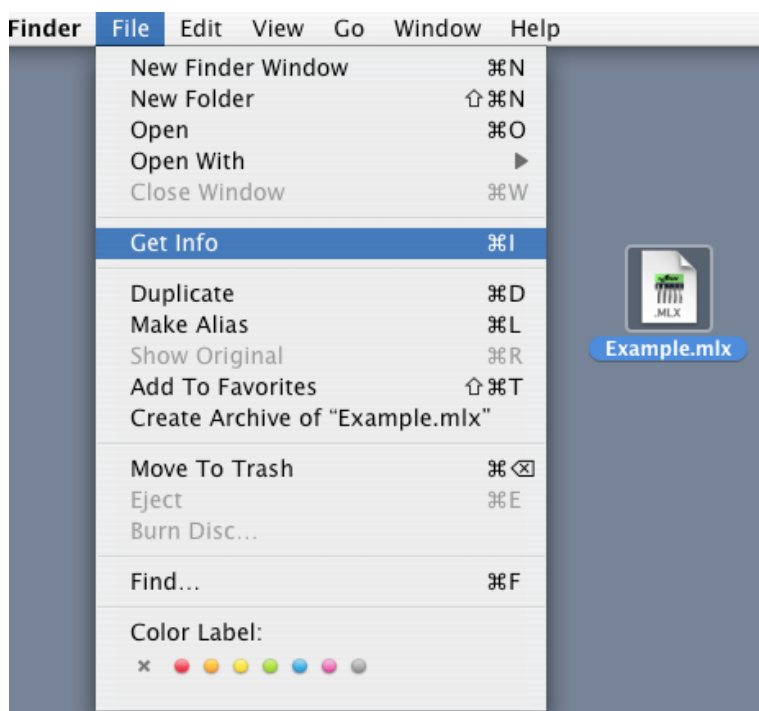
Step 4: Click Apply to make connections. Congratulations, You are now connected!

You will want to save this connection as Template File. The next time you want the same connections, you are one click away.

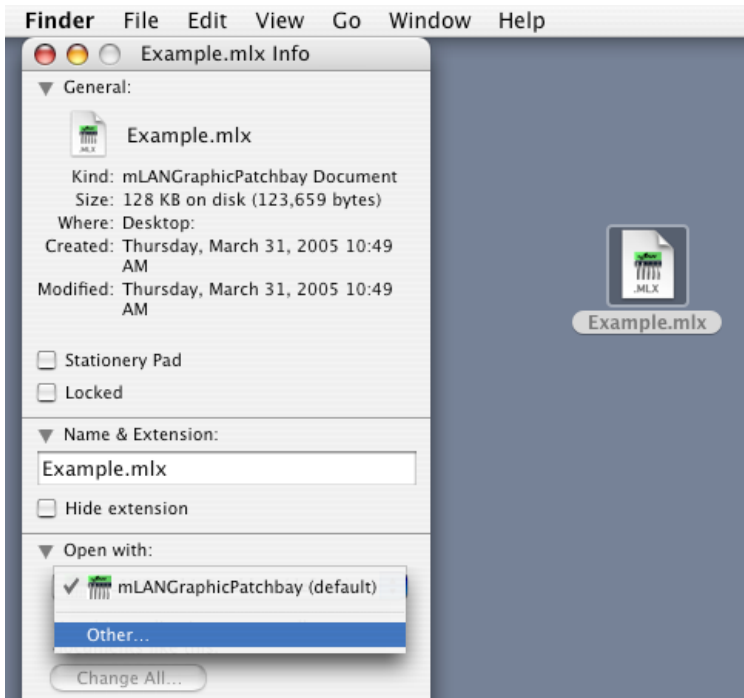


Now that you have connected and saved a Template file, you can automate this process using the template with the Auto connector. You should now quit Graphic Patchbay. You are going to change the “open with” properties of the template file to launch Auto connector when it is opened. When the Auto Connector loads a template file it automatically connects the network without hitting an apply button.

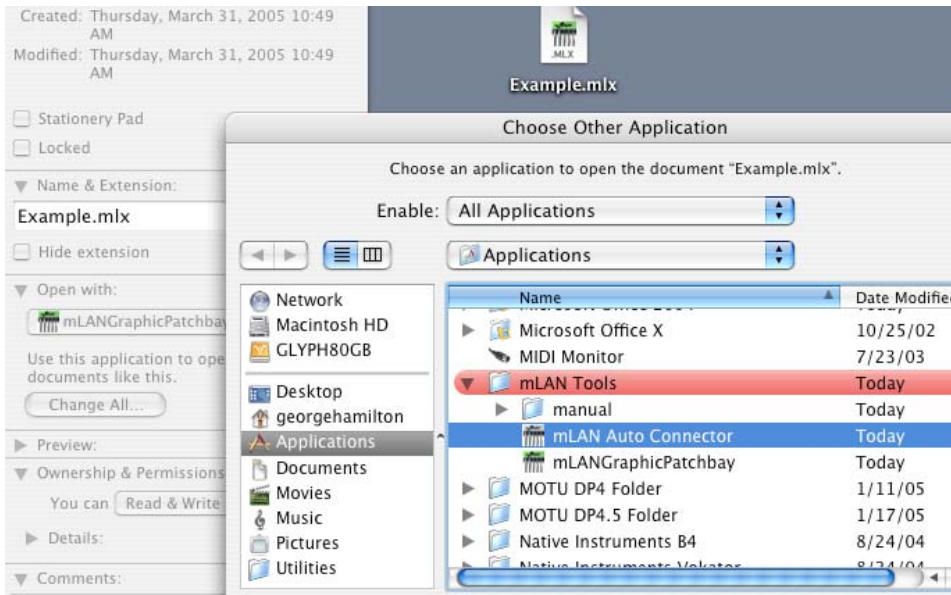
Step 1: Select the Template File and open the Get Info about the file



Step 2: Select Open with: (other..)



Step 3: Enable All Applications and select mLAN Auto Connector in the Applications/mLAN Tools folder.



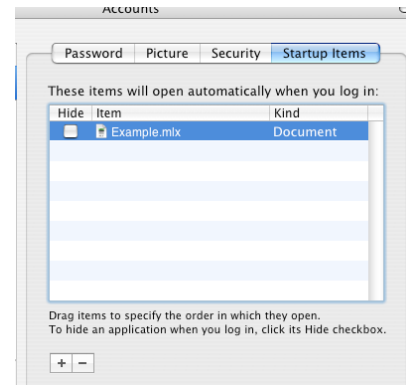
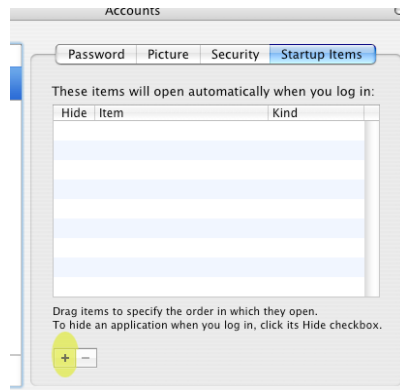
It's as easy as 1-2-3.

Now we are going to add the template file to the system start up so that the mLAN network will be established every time you power up.

Step 1: Open System Preferences and select Accounts (Below Left)

Step 2: Select the Startup Items Tab and click on the + button to add the template to your start up folder. (Below Middle)

Step 3: Add your newly created Template File that launches the Auto Connector to your Startup Folder (Below Right)



The next time you power on your Mac, the template file will launch the Auto Connector and connect your mLAN devices if they are powered on and awaiting the mLAN clock. This group of 3 and 4 step procedures can do very sophisticated connections, remember them and recall them in less time than connecting MIDI and Audio in and out of a computer interface. You can build libraries of connections to do specialized tasks that were too much of a hassle to consider in the past.

Enjoy using mLAN Tools 1.0.4 for OSX.