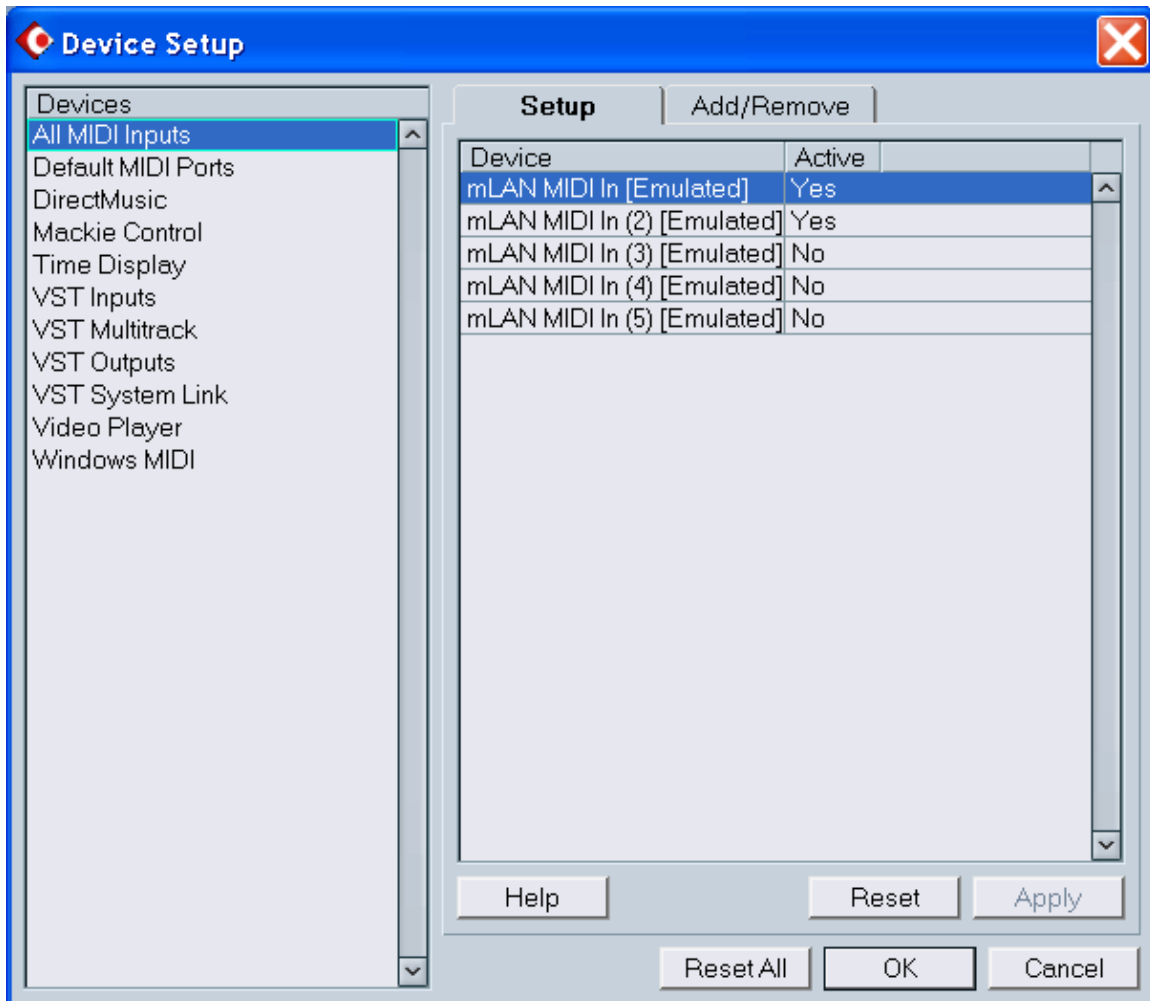


## Setup Guide for the Using mLAN 16e and Motif ES Multi Part editor with Cubase.

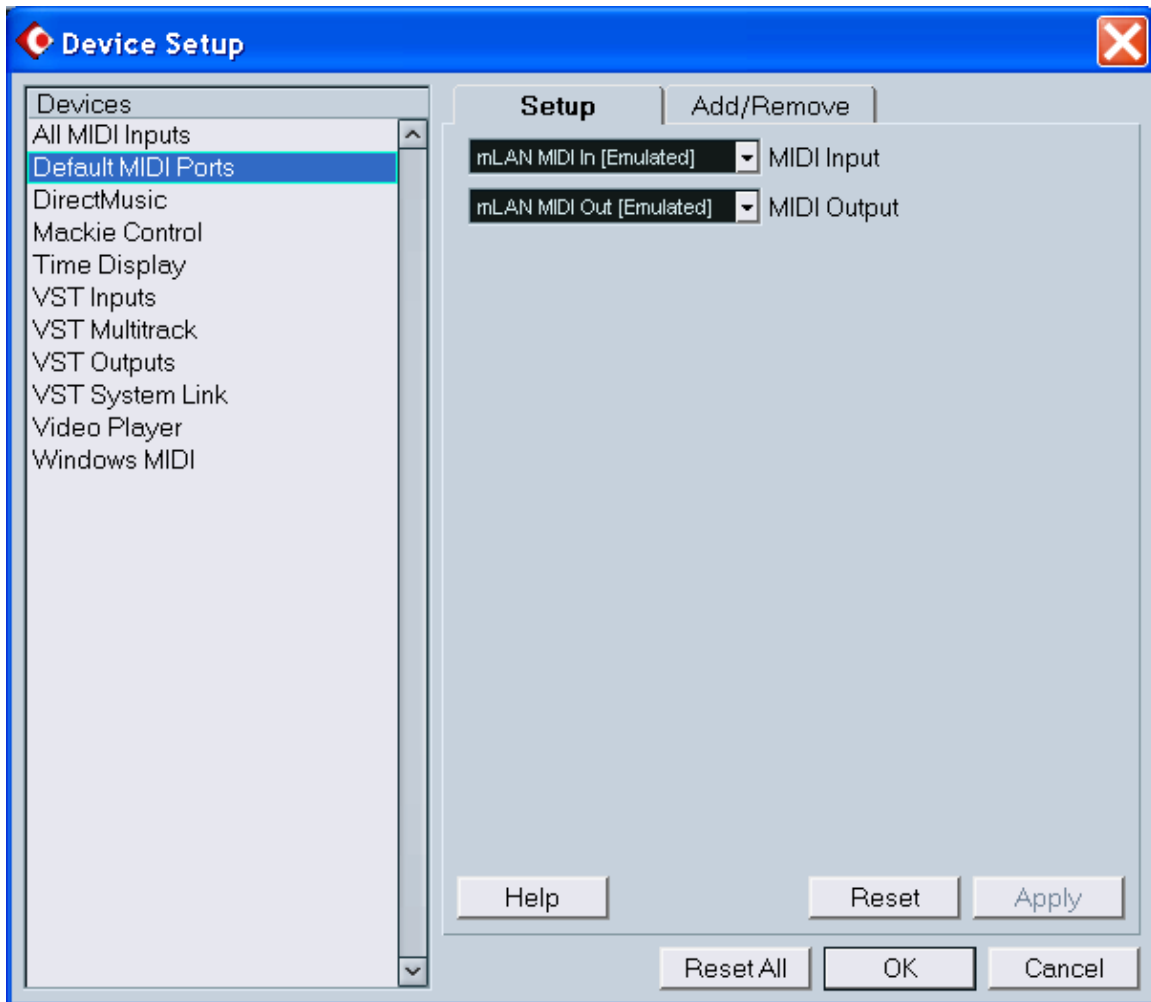
The Motif ES and mLAN 16e are a powerful combination especially if you set the MIDI correctly to use all of the tools that are available to you. The Motif ES uses mLAN MIDI In and Out (mLAN MIDI Port 1) for sending note data and control data to the computer. It uses Port 4 for the emulation of Mackie/Logic Control. This is different than the 01X, which uses Port 1 for emulating Mackie Control and Port 4 for communication with Studio Manager. It uses Port 3 to communicate with the Multi Part editor for Motif ES. This was done to avoid Port Conflicts and because the core Motif ES system must use Port 1 for basic MIDI I/O.

Here is a step-by-step setup guide for Setting the mLAN16E up with Cubase.

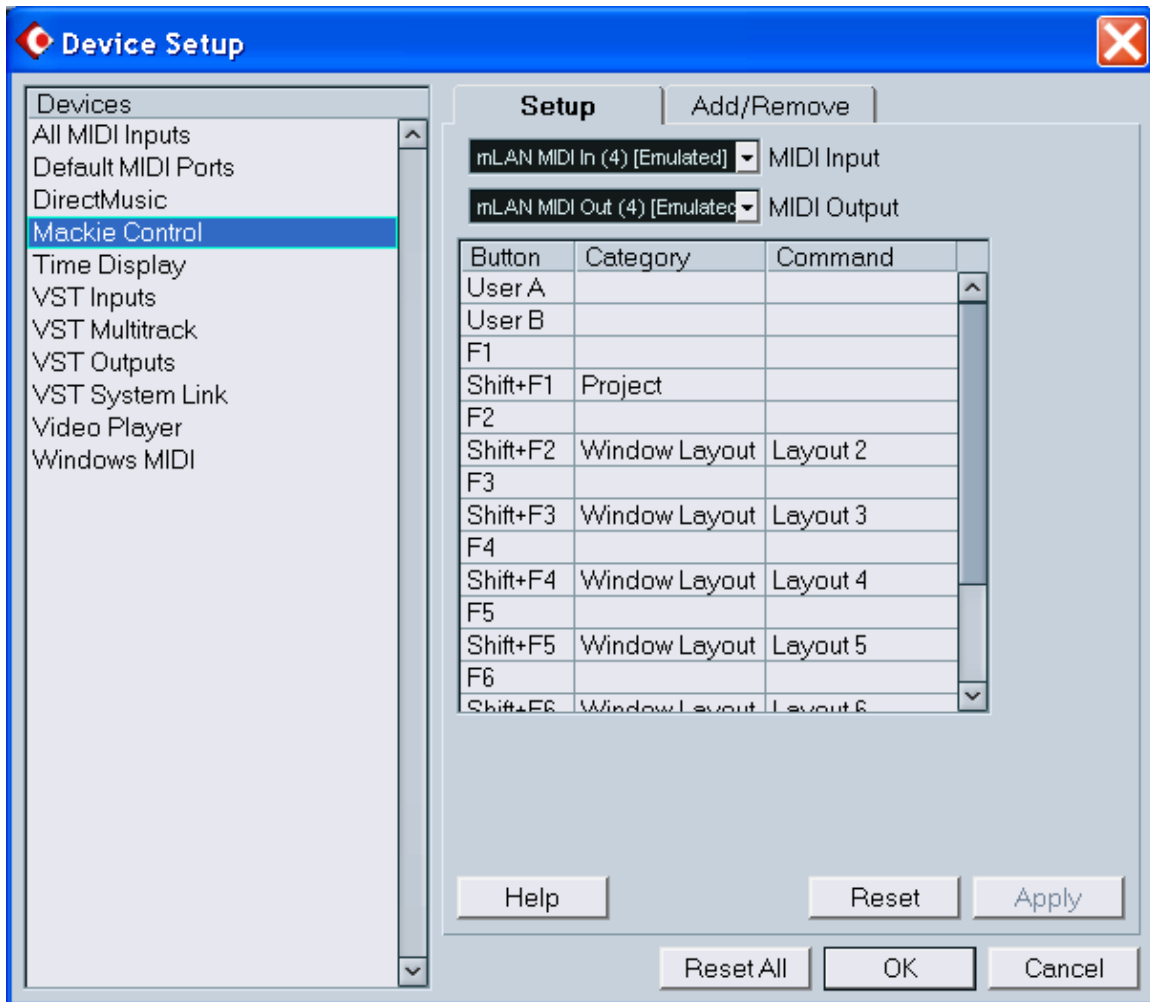
First in Cubase, select Devices from the pull down menus and the select Device Setup. For All MIDI inputs (which are the Ports that will be used for inputting note and control data to Cubase , Set mLAN In ( Port 1 ) and if you want to use the MIDI In/OUT on the back of the Motif ES also enable Port 2. The other Ports are not used for Inputting note data to Cubase.



Next set the default MIDI In Port, this is the default Port when adding a new MIDI track and so should be set to mLAN In (Port 1).



Finally set the Mackie Control setting to Port 4 for both In and Out.



Next we need to setup the Motif ES parameters In the Utility Mode of the Motif ES.

Press F4 CTLASN, then SF4 Remote

Set Mode A to Cubase Port 4

Set Mode B General Port 3

**Press Enter to Set the remote setting (it's easy to forget this step).**

Press F5 MIDI, then SF2 Switch and Set Local Cntrl to OFF

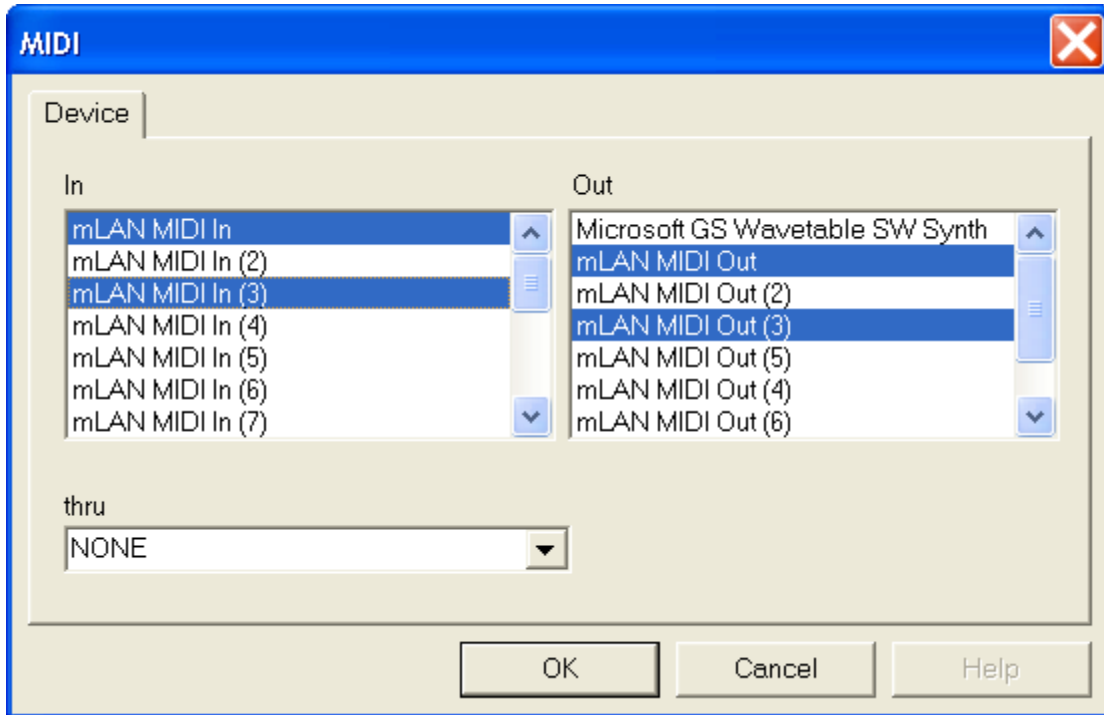
Press SF3 Sync and sync to MIDI (Cubase must be the master clock)

Press SF4 Other and set MIDI IN/OUT to mLAN

Finally Press store to store your utility settings so they are remember on the next Power on.

You may also want to back up your ES to an external memory device (HD or Smart Media) at this point.

Launch The Multi Part editor and in MIDI Setup dialog box, set mLAN MIDI in and mLAN MIDI (3) to active (Highlighted) for both Input and Output. Leave Thru set to None.



Next go to the Setup pull down menu in the Multi Part editor and select Setup. Set the MIDI Remote Port In and Out to mLAN MIDI 3  
Set the MIDI In and OUT Port to mLAN MIDI In and OUT (Port 1)

You need to set the MIDI IN and Out Port to mLAN Port 1 labeled mLAN MIDI in and out) so that you can bulk dump the Multi setup between the computer and the Motif ES.

The image shows a 'Setup Dialog' window with the following settings:

- MIDI In Remote Port: mLAN MIDI In (3)
- MIDI Out Remote Port: mLAN MIDI Out (3)
- MIDI In Port: mLAN MIDI In
- MIDI Out Port: mLAN MIDI Out
- Device No.: 1
- Dump Interval: 100 ms
- Export to Host: All data

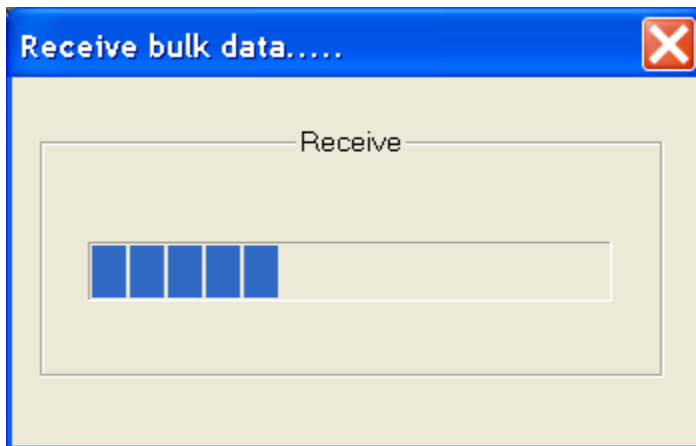
Buttons: OK, Cancel

In Pattern or Song Mode, pressing Remote ON/Off so the LED is lit gives you control over Cubase's mixer and you will see all the parameters of the Cubase Mixer in the display of the ES. You can even press SF2 and select and control software VSt plug-ins and see their parameters displayed in the screen for the ES.

Pressing and holding SF5- Shift and pressing Remote ON/Off will toggle you to control the Motif ES Multi Part Editor. To return to Cubase Remote control pressing and holding SF5 Shift and pressing Remote ON/Off simply toggles between Cubase and Multi Part editor.



In the Multi Part editor, selecting Receive Multi Bulk (or pressing CTRL + R) will initiate a bulk receive and transmit all of the Mix settings from the Motif to the Multi Part editor. Selecting Transmit Multi Bulk (or pressing CTRL + T) will initiate a bulk transmit and transmit all of the Mix settings from the Multi Part editor Motif to the Motif.



You can then save this as a Multi Part Editor file so that you can open it again when you want to restore your Motif ES setting and Bulk Transmit the Data to Motif ES. Once we get Studio Connections working you will be able to open the Multi Part Editor inside of Cubase and when press Save on Cubase it will save the Multi Part editor Setting with the Cubase Project file.

