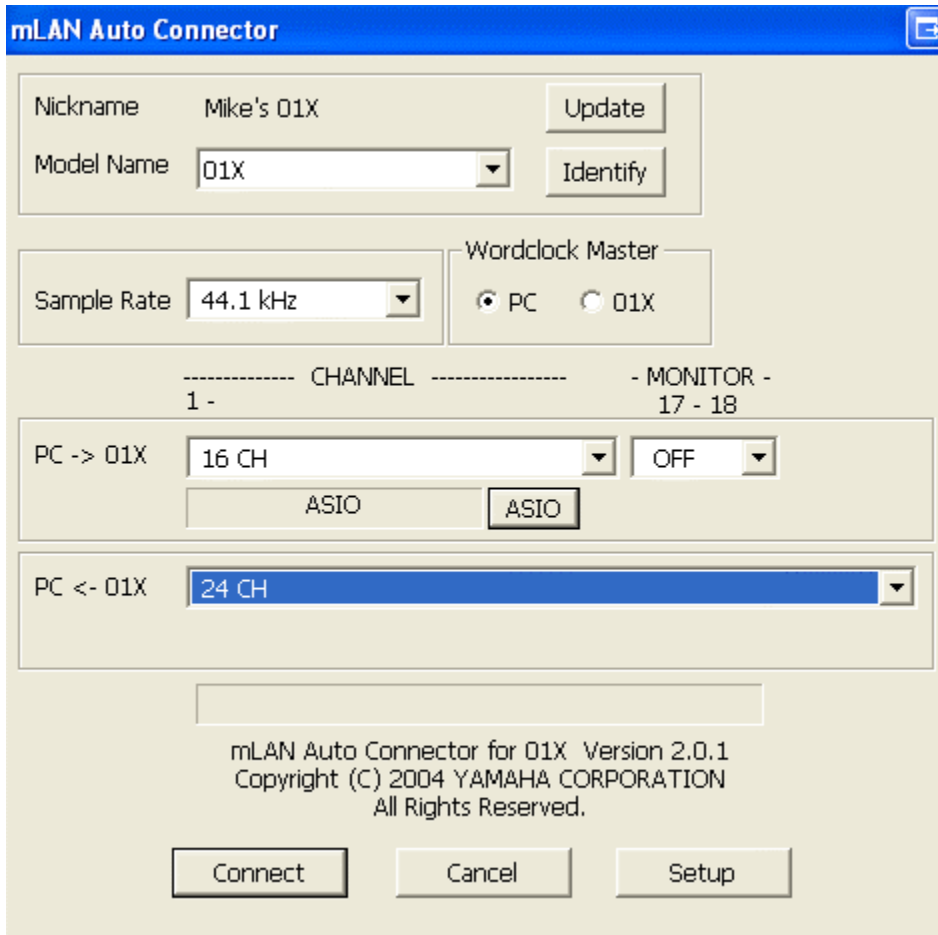


## mLAN Setup for Sonar & the 01X

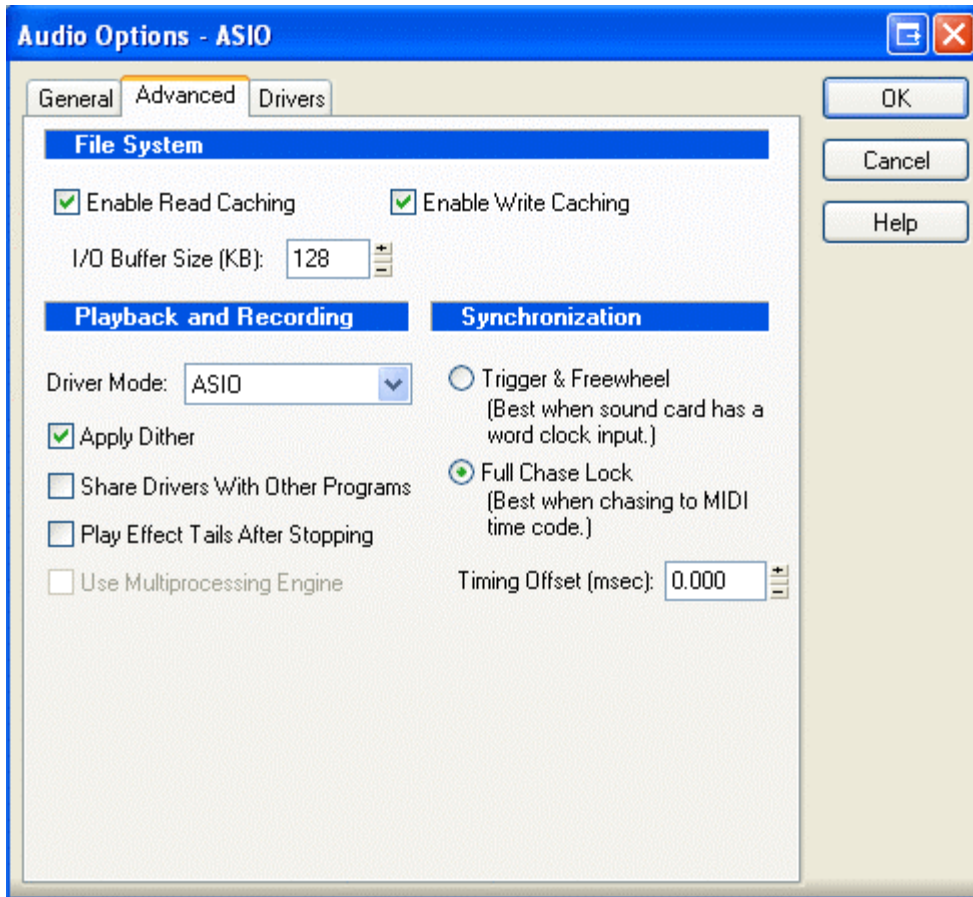
Use the Auto Connector and connect the channels as follows.



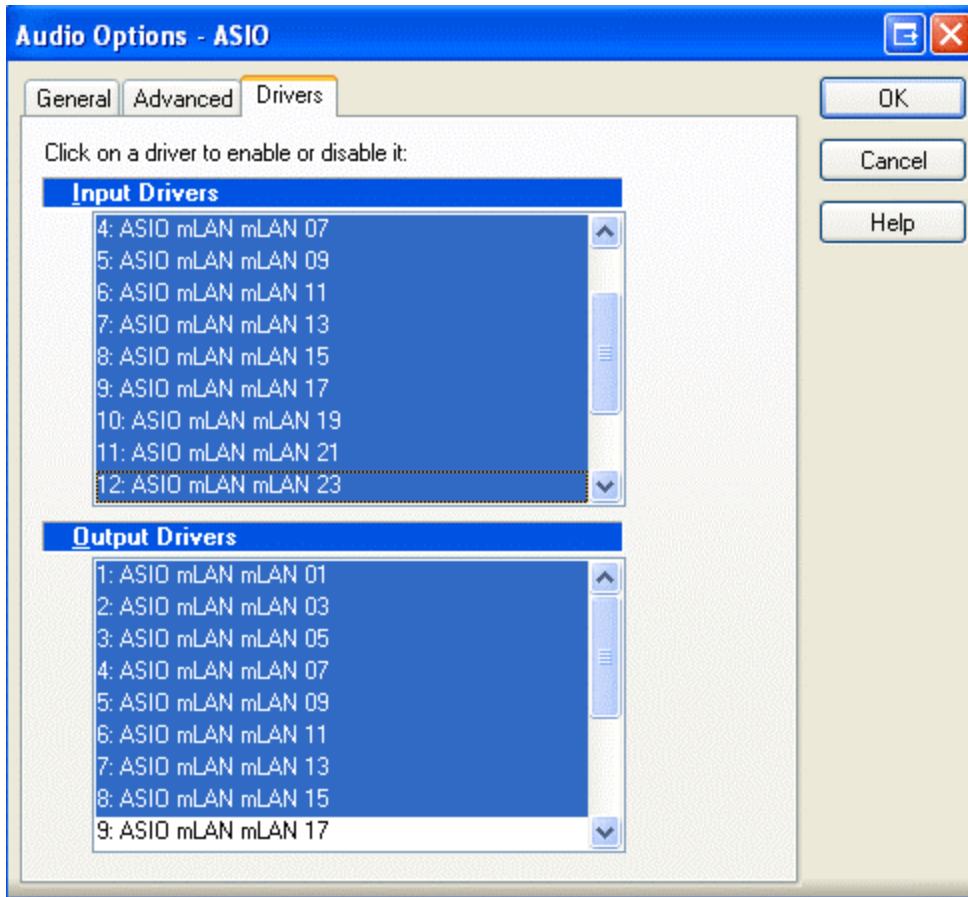
Now lets go to Sonar. In this example, we are showing 3.1.1

From the OPTIONS Menu select AUDIO.

In the AUDIO Options screen, select the ADVANCED TAB. Change the Playback and Recording Driver Mode to ASIO. (You may have to restart Sonar after setting this time).



After restarting, return to the Audio Options screen. This time select the DRIVERS tab.



Highlight the mLAN input and output channels as shown. Sonar groups channels here in pairs, so you only see ASIO mLAN 1, 3, 5, 7, 9...etc). For the input side you should select as many channels as you connected in the auto connector (24 in the example shown above). Select 16 output channels as well (again Sonar may require a restart after making these settings).

Start a new project in Sonar and import a .wav file to track one and press play. At this point, you should see the audio meters in Sonar. If you don't hear anything yet, don't panic. Now we need to set up the 01X itself.

First make sure your stereo Master fader is at 0dB. Have speakers or headphones plugged into the 01X and the monitor level turned up slightly.

On the front panel of the 01X, select the INTERNAL button (white button at the top right of the screen).

Next find the Mixer/Layer buttons on the 01X (also white buttons in the fourth row). Press the second button from the left is labeled mLAN 9-16. These are the first 8 mLAN channels coming out of the computer (they are mixing channels 9-16 on the 01X but mLAN channels 1-8 as the display on the 01X now reflects).

Now grab faders 1 and 2 on the mixer and bring them up 0dB. If you choose a STEREO

audio file, you should now PAN those two channels on the 01X mixer by pressing the PAN button, then use the knobs on those channels to pan them left and right.